

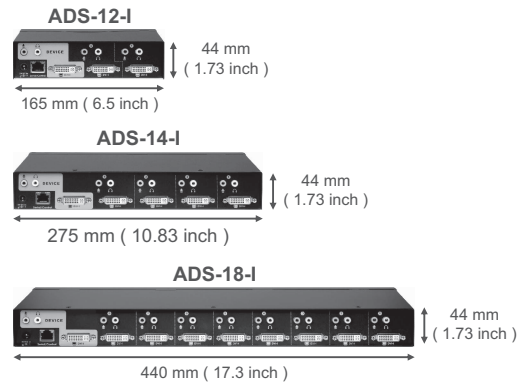
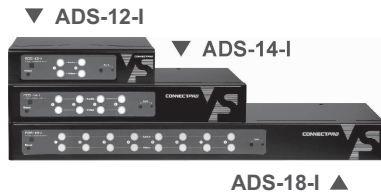


ADS-12-I / ADS-14-I / ADS-18-I

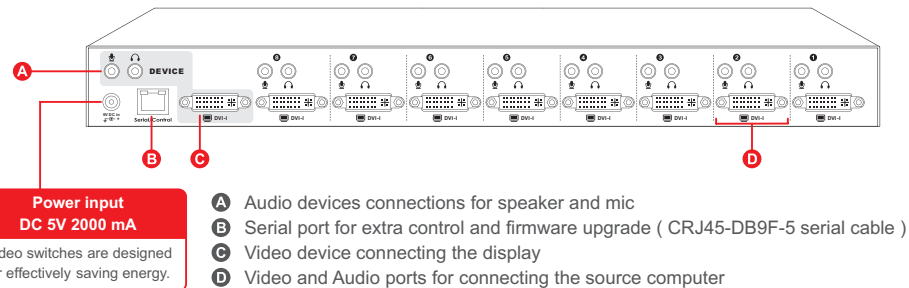
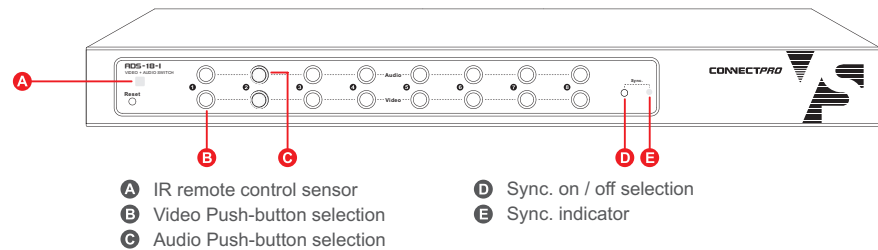
Professional Full DDC DVI and Audio switch w/ Audio Switching and Procession Technology

Installation Guide

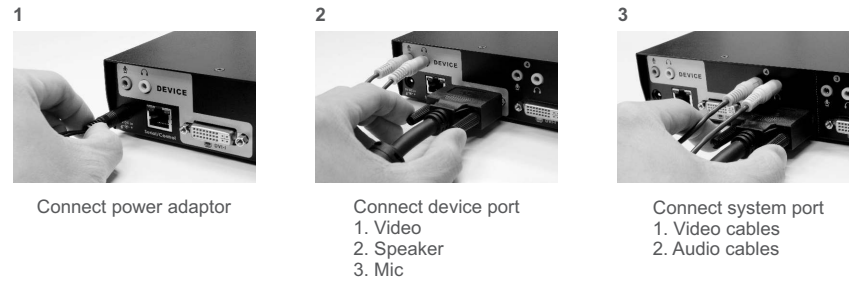
Product View



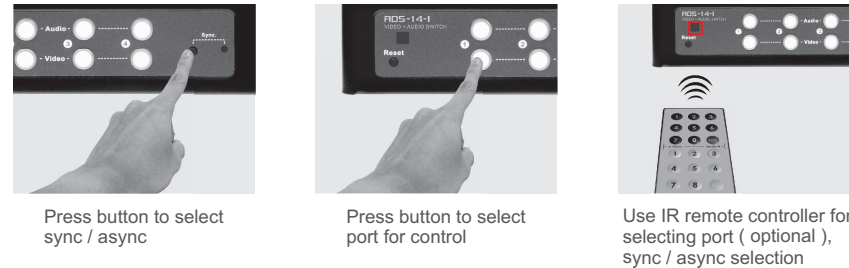
Front & Rear View



Connect Cables



Port Selection

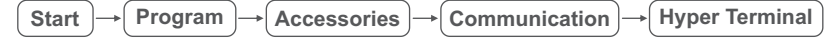


Features & Benefits

- Built-in All-time Full DDC supported throughout all switch channels
- Patented Audio Switching and Procession Technology provides faster and more reliable audio quality
- Enables up to 8 PCs to connect to one set Video/Audio output (ADS-18-I)
- Max video resolution supported 1920 x 1080p
- Easy switching by pressing push-button or IR remote controller
- Video / Audio sync & async control selectable
- RS-232 serial control and firmware upgradable
- IR remote control: 3 meters
- Compatible with Windows (Windows 98, 2000, XP, Vista, Windows 7), Linux and Mac OS
- DDC; DDC2; DDC2B Support

RS-232 Command (Example for Windows only)

1. From Windows



Click on "Start", choose "Program", choose "Accessories", select "Communication", then click on "Hyper Terminal"

2. Set up Windows hyper terminal

- In hyper terminal
 - create a "new connection"
 - Type in a name for the connection (for example, ADS-18-I), click "OK"
- Under "connect using" select "Direct to Com N (N:1, 2, 3...)", click "OK"
- Com 1 setup
 - Set "Bits per second" to 11520
 - Set "Data Bits" to 8
 - Set "parity check bit" to "None"
 - Set "Stop Bits" to 1
 - Set "Flow control" to "None"Then Click OK - the hyper terminal screen should appear
- Click "File", select "Properties" from the menu bar
- Click on "settings", use default:
 - "Windows key"
 - "Ctrl + H(C)"
 - Auto detect and back scroll 500 lines
- Go to "ASCII setup" and select the following items
 - Sending - check: "send line ends with line feed" and "echo typed characters locally" box
 - Receiving - check: "wrap long lines"

3. After the above actions

- Plug or replug the RS232 cable and the control window will pop up immediately
- Now you see "ADS Link", version such as "ADS-18-I F/W:V 1.1" and status such as "s1v1", "s1a1"
- You are ready to do all commands now !!

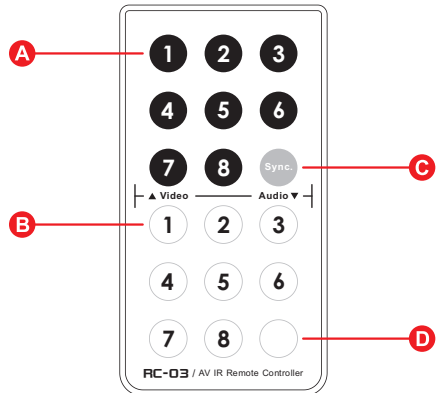
4. Serial port command

sync : audio / video synchronized command
async : audio / video asynchronous command
s1v0 : show all status
s1a0 : show all status
s1v1 : select video port 1
s1a1 : select audio port 1
s1v2 : select video port 2
s1a2 : select audio port 2
...
s1v8 : select video port 8
s1a8 : select audio port 8
Default : reset all setting back to default setting

Ordering Information

Model	Description
ADS-12-I	2-port DVI and Audio Switch with Procession Technology
ADS-14-I	4-port DVI and Audio Switch with Procession Technology
ADS-18-I	8-port DVI and Audio Switch with Procession Technology
Optional part / accessory	
Cables	
DVI-202-03D	3-ft Male-to-Male DVI cable (DVI-D, 24+1)
DVI-202-06D	6-ft Male-to-Male DVI cable (DVI-D, 24+1)
CAS-202-03	3-ft Stereo Audio cable
CAS-202-06	6-ft Stereo Audio cable
	* Special length of DVI & Audio cables are available (10-ft, 15-ft, 25-ft, 50-ft)
CRJ45-DB9F-5	5-ft serial/control and firmware upgrade cable (RJ-45 to DB9 female)
Power Adaptor	
PAUS-DC5V2A	Power supply DC 5V (2000 mA) - AC 110/220V for USA
	* Any other interface is available upon request
IR Remote Controller	
RC-03	IR remote controller for Video / Audio Solution products
Rack Mounting Kit	
RMK-1901	19" rack mounting bracket set for 4-port Video and Audio Switch
RMK-1902	19" rack mounting bracket set for 8-port Video and Audio Switch
RMK-19	19" rack mounting cable support bar

IR Remote Control Command



- A** Video selection
- B** Audio selection
- C** Sync. on / off selection
- D** Customer setting - Volume adujsting

Specification

		ADS-12-I	ADS-14-I	ADS-18-I
Functional				
System port number		2	4	8
Panel button control		2	4	8
Button LED		Selected - on		
Sync / Async LED		Sync : LED on ; Async : LED off		
IR remote control		Yes (Built-in receiver, controller RC-03 optional)		
IR remote control distance		3M		
Hot plug-and-play		Yes		
Serial control		Yes		
Video resolution		1080p		
Device connectors	Video	DVI-24+5 Female x 1		
	Audio	Speaker x 1 , Mic x 1 (3.5mm)		
System connectors	Video	DVI-24+5 Female x 2	DVI-24+5 Female x 4	DVI-24+5 Female x 8
	Audio	Speaker x 2 , Mic x 2 (3.5mm)	Speaker x 4 , Mic x 4 (3.5mm)	Speaker x 8 , Mic x 8 (3.5mm)
Mechanical				
Height		44 mm (1.73 inch)	44 mm (1.73 inch)	44 mm (1.73 inch)
Width		165 mm (6.5 inch)	275 mm (10.83 inch)	440 mm (17.3 inch)
Depth		76 mm (2.99 inch)	131 mm (5.16 inch)	131 mm (5.16 inch)
Weight		530 g (1.17 lb)	1150 g (2.54 lb)	1740 g (3.84 lb)
Environmental				
Operating temp		0 to 60 °C (32 to 140 °F)		
Storage temp		-30 to 70 °C (-22 to 158 °F)		
Humidity		0~80% RH, NC		
Power				
Operating voltage		DC 5V (2000 mA)		
Power frequency		50-60 Hz		
Power consumption		1 W	1.2 W	1.5 W
Supported				
Cascade		Yes		
Stereo audio		Yes		
DDC		DDC , DDC2 , DDC2B		
VGA		DVI-I (24+5)		
Certification				
		FCC, CE		

Limited Warranty For ConnectPRO Video / Audio Solution Product

ConnectPRO offers 1-year limited warranty for all of its Video / Audio Solution products. ConnectPRO stands behind its products assured that you're purchasing a proven technology with quality and reliability.



ConnectPRO - USA, Taiwan
www.connectpro.com

Corporate Office

20525 Paseo Del Prado Walnut, CA 91789, USA
Tel +1-909-444-9288 Fax +1-909-444-9289

Design Center and Operational Hubs

13F., No.120, Sec. 1, Sanmin Rd., Banciao Dist.,
New Taipei City 220, Taiwan, R.O.C.
Tel +886-2-8964-2700 Fax +886-2-8964-2977